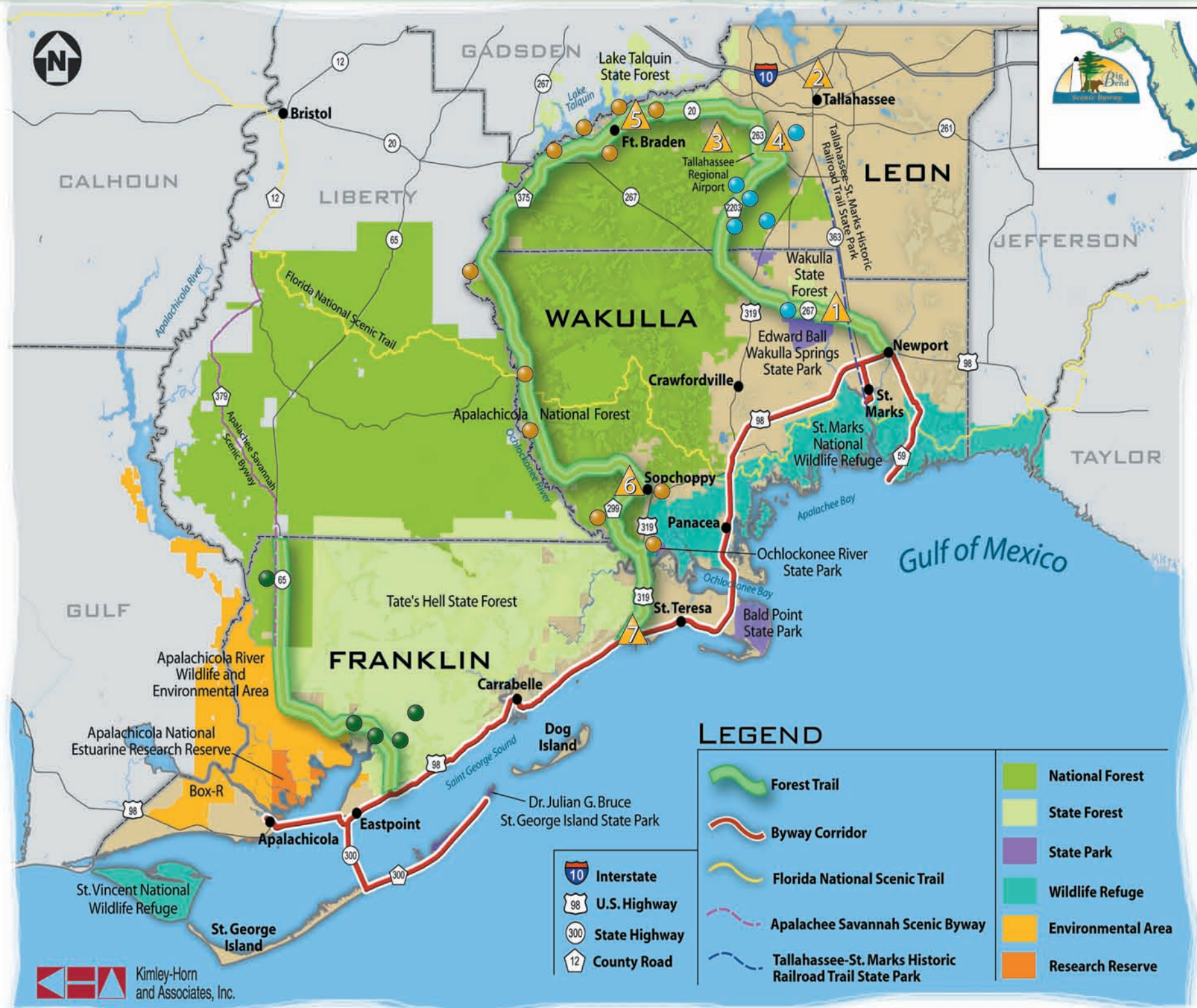


# Explore UNDISCOVERED North Florida



## Forest Trail Highlights



**Eastern Section:** 28.6 miles on Coastal Highway/US 98 at Newport to Bloxham Cutoff/SR 267, to Springhill Rd/CR 2203, to Capital Circle SW ending at Blountstown Highway/SR 20.

- Bloxham Cutoff/SR 267: Wakulla State Forest (I, R, W, P), Edward Ball Wakulla Springs State Park & Lodge (R, L, F, I, W, P, B)
- Apalachicola National Forest access from Springhill Rd: Leon Sinks Geological Site (I, R, W, B, P), Trout Pond Recreational Area (I, R, W, P, B), Historic GF&A Bike Trail (R), Lost Lake Recreational Area (I, R, W, P, B)
- City of Tallahassee (F, L, B, I): Tallahassee Museum (I, R, W, F, B)

**Central Section:** 69.6 miles on Blountstown Highway/SR 20 to Smith Creek Highway/CR 375 to the City of Sopchoppy on Rose Ave/CR 22, return on CR 22 to Curtis Mill Rd/CR 299 to Sopchoppy Highway/US 319, ending at intersection with Coastal Highway/US 98 at SummerCamp.

- Blountstown Highway/SR 20: Apalachicola National Forest - Silver Lake Recreational Area (I, R, W, P, C, B), Lake Talquin State Forest - Fort Braden Trails (I, R, W, P, C, B), Lake Talquin State Park - River Bluff Picnic Site (P, W, R, B, I), Historic Ft. Braden School (I), Leon County Park - Luther Hall Landing (I, R, W, P, C, B), Apalachicola National Forest - Vinzant Riding Trail (R, W), Lake Talquin State Forest near CR 375 - Bloxham Tract (W, P, B)
- Spring Creek Highway/CR 375: Apalachicola National Forest - Pine Creek Landing (R, W, C), Two Rivers Bridge & Porter Lake Campground (I, R, W, P, C, B), Florida National Scenic Trail (R, W), Mack Landing (R, W, P, C, B)
- City of Sopchoppy (F, I, C, B): Historic GF&A Depot (I, B), Historic School & Gym (I), Myron B. Hodge City Park & Sopchoppy River (I, R, W, P, C, B)
- Curtis Mill Rd./CR 299: Apalachicola National Forest - Wood Lake Landing (R, W, P, C, B)
- Sopchoppy Highway/US 319: Ochlockonee River State Park (C, I, R, W, B, P)

**Western Section:** 25 miles on SR 65 from Intersection with US 98 at Eastpoint to Liberty County Line.

- Tate's Hell State Forest (I, R, W, P, C, B): Cash Creek (W, R, P, B), Dwarf Cypress Dome Boardwalk (I, W)
- Apalachicola River Wildlife & Environmental Area, Florida Fish & Wildlife Conservation Commission (R, W): Sand Beach Recreational Area and Tower (I, R, W, P), Graham Creek Landing (R, W), Whiskey George Landing (R, W), Doyle Creek Landing (R, W)
- Apalachicola National Forest: Fort Gadsden Historic Site (I, R, W, P, B), Hickory Landing & Wright Lake (I, R, W, P, C, B)

### Byway Information Centers

- 1 Wakulla Springs State Park and Lodge
- 2 Visit Tallahassee
- 3 Tallahassee Regional Airport Visitors Center
- 4 Tallahassee Museum
- 5 Ft. Braden Library
- 6 Sopchoppy Historic Depot
- 7 St. Joe SummerCamp

**Legend:** I-Interpretation, R-Recreation, W-Wildlife Viewing, L-Lodging, F-Food, P-Picnic, C-Camping, B-Bathrooms

Visit [www.floridabigbendscenicbyway.org](http://www.floridabigbendscenicbyway.org) to download *The Guide to the Big Bend Scenic Byway*

