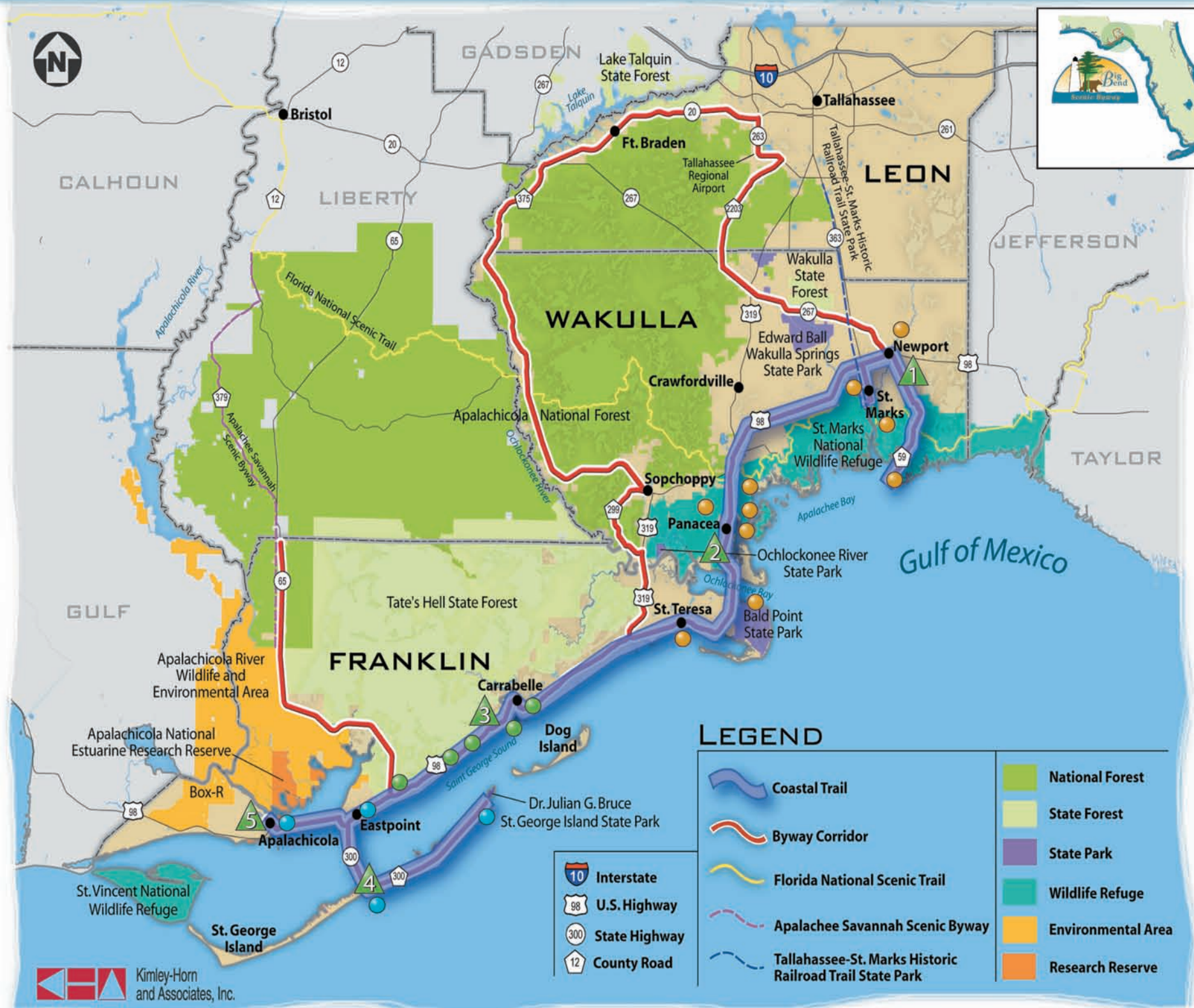


# Explore UNDISCOVERED North Florida



## Coastal Trail Highlights



**Eastern Section:** 47.3 miles on Coastal Highway/US 98 at Newport with two spur routes (Lighthouse Rd/CR 59 and Port Leon Dr/SR 363) through St. Teresa in Franklin County ending at intersection with Sopchoppy Highway/US 319.

- Newport (R, F, B): Wakulla County Park (I, R, W, P, C, B), St. Marks National Wildlife Refuge & Lighthouse (I, R, W, P, B)
- City of St. Marks (I, R, L, F): San Marcos de Apalachee Historic State Park (I, P, B), Tallahassee-St. Marks Historic Railroad Trail State Park (R, B), Waterfront Park (I, R, W, P, B)
- Wakulla River (R): Wakulla Beach Road with access to Florida National Scenic Trail (R)
- Panacea (I, R, L, F, C, B): Bottoms Road (W), Otter Lake Recreation Area (B, W, R, P), Gulf Specimen Aquarium (I, W, B), Big Bend Maritime Center (I, W, B), Rock Landing (R, F, B), Mashas Sands Recreation Area (R, W, P, B)
- Bald Point State Park (I, R, W, P, B): Leonard's Landing (I), FSU Marine Laboratory (I)

**Central Section:** 23.1 miles on Coastal Highway/US 98 with route change in Carrabelle (Gulf Ave/30-A to Marine St) ending on US 98 at intersection with SR 65.

- City of Carrabelle (I, R, L, F, B): Frog Pond (W), River Walk (I, P, B), Carrabelle Historic Museum (I, B), Camp Gordon Johnston Museum (I, B)
- Carrabelle Beach (I, R, P, B): Crooked River Lighthouse (I, R, W, P, B)
- Tate's Hell State Forest (I, R, C, B): High Bluff Hiking Trail (I, R, W, P, B), State Forest Driving Trail (W)

**Western Section:** 25.6 miles on Coastal Highway/98 with route change in Eastpoint (Patton Dr/SR 30 to Bryant Patton Bridge and St. George Island, west Gulf Beach Dr/SR 300, back to mainland, east on South Bayshore Dr to US 98) crossing John Gorrie Bridge to Apalachicola, ending at city dock on Market St.

- Eastpoint (F): Marion Millender Park (W, P), Apalachicola National Estuarine Research Reserve (I, W, P, B)
- St. George Island (I, R, L, F, B): Dr. Julian G. Bruce SGI State Park (I, R, W, P, C, B), Little St. George Lighthouse (I, B), Island Bike Trail (R)
- Apalachicola (I, R, L, F, B): St. Vincent National Wildlife Refuge Visitor Center (I, B), Apalachicola Maritime Museum (I, B), Orman House State Park (I, B), Chapman Botanical Gardens (P), John Gorrie State Park (I, B), Chestnut Street Cemetery (I), Dixie Theatre (I, B)

### LEGEND

- Coastal Trail
- Byway Corridor
- Florida National Scenic Trail
- Apalachee Savannah Scenic Byway
- Tallahassee-St. Marks Historic Railroad Trail State Park
- National Forest
- State Forest
- State Park
- Wildlife Refuge
- Environmental Area
- Research Reserve

- Interstate
- U.S. Highway
- State Highway
- County Road

### Byway Information Centers

- 1 St. Marks National Wildlife Refuge Visitors Center
- 2 Wakulla Welcome Center in Panacea
- 3 Carrabelle Chamber of Commerce
- 4 St. George Island Visitors Center
- 5 Apalachicola Chamber of Commerce & Visitors Center

**Legend:** I-Interpretation, R-Recreation, W-Wildlife Viewing, L-Lodging, F-Food, P-Picnic, C-Camping, B-Bathrooms

Visit [www.floridabigbendscenicbyway.org](http://www.floridabigbendscenicbyway.org) to download *The Guide to the Big Bend Scenic Byway*

